



## Hughes Magic Inc.

352 N. Prospect St.  
Ravenna, OH 44266  
(330)296-4023

e-mail- hugmagic@raex.com

### Vanishing Bush & Pot

(aka DeLage's Fastest Trick in the World)

This is one of the fastest tricks in the world and certainly one of the most spectacular. A 24" high bush full with 12 luxuriant blooms and 5" pot vanishes instantly and completely without any covering. A slender, stainless steel upright supports a thin table less than 1/2" thick. Works surrounded anytime.

This is the original and authorized version from the inventor, Al DeLage. It is manufactured in strict accordance with my personal instruction from Horace and Marie Marshall. It is 100% proven design that has fooled audiences since 1954 when first introduced by Horace Marshall. This unit has been rated by John Mendoza and Rich Bloch in Magic Manuscript with an "A" rating, the highest possible. It has been featured by Harry Anderson on "HBO COMEDY RELIEF" and Geoff Durham "The great Soprendo" on Thames television in 1989. A product of superior craftsmanship. New improved model with the latest developments included. Normally made with red flowers. Others colors available upon request.



### CANE TO BOUQUET

AVAILABLE AGAIN IN LIMITED SUPPLIES!!!!



For many years, we were unable to produce this effect because of our inability to obtain the proper type and size of steel vanishing cane. Twelve, large blooms, each over 5" across, are produced as a

full lavish bush instantly. This is not the anemic feather flower bouquet one see so often, but huge full bush. The bush resembles our bush in the Vanishing Bush and Pot. With the addition of a second pot, which we can provide, this effect can be used to reappear the Vanishing Bush. Or use it as a spectacular transformation by itself.

Made with high quality steel canes and in a variety of bright colors. This is the spectacular and quality effect you expect and demand. No other cane to bouquet comes close to this for size and fullness of bouquets.

### MISC. FLOWER EFFECTS BUSH PRODUCTION

The instant growth of a twelve bloom bush in a beautiful jardiniere. Ready for immediate use, perform anywhere or place, packs small and produces big.

A bamboo mat is shown empty, bunched up and placed into an attractive pot. Upon removal, a beautiful twelve bloom bush, full of foliage, has appeared. Bush is 20" tall and made with open bloom flowers in solid or variegated colors.

### BAMBOO MAT AND CRYSTAL TRAY

Elegant Plexiglas tray, trimmed in kinkle chrome, is displayed. A mat is shown empty and placed over the tray to produce first one and then a second large bush of twelve, gorgeous blooms. A double production that can be performed surrounded at any time. Packs well for trouping, yet makes a spectacular display.



The two 20" bushes are normally supplied in red and yellow bushes, though we can make them up in any color. Supplied with our normal open bloom flowers. The unit could also be made with our famous rose flowers or with double pots instead of the tray. Natural color bamboo mat is furnished. Impressive, 100% practical, and an assured applause getter.



## Hughes Magic Inc.

352 N. Prospect St.  
Ravenna, OH 44266  
(330)296-4023

e-mail- hugmagic@raex.com

### MINI MAT TRICK PRODUCTION

A small 16" tall mat is shown empty and rolled up and placed into a small pot. When removed, a four bloom bouquet has appeared standing about 12" tall and 12" wide. Silks could first be produced from the mat if you wish. Made with open bloom, poinsettia, or rose flowers.

### DROOPING FLOWER

One of the most used props made the way it should be. A large bloom slowly wilts upon command. Just because it is often used a "throwaway" in a routine does it have to look like one? You'll be proud to own and use our version. Available in many brilliant colors and designed to fit into a



Fantasio candle. Also made in peony, poinsettia, and rose flowers.

### WAND TO FLOWER

The magician's wand magically changes into a large beautiful flower. Available in several vivid colors. Made with Fantasio's plastic wands. Ideal for close-up, club, or stage work. Ingenious construction and finest workmanship.

### CANDLE TO BOUQUET

An attractive metal candle stick holds a large 12" burning candle. The flame is extinguished and the candle is covered with a silk. Upon a removal a huge bush of twelve beautiful flowers have taken the candle's place. Entirely self-contained. No body or table loads. Work it anytime or place.

This is not some skimpy little bush that is pro-

duced, but almost 18" tall and 14" wide. Almost twice the height of the candle. Made with the finest feathers available, handselected, and shaped into twelve gorgeous blooms. It can be used to reappear our Vanishing Bush as the bush is similar. The magnitude of this production will stun any audience.

### KARRELL FOX SNAKE BOUQUET

Another great idea from the fertile mind of the late Karrell Fox. Made under an exclusive agreement with Karrell. Performer produces a large bouquet of flowers which he starts to hand to his on-stage assistant. As he does, suddenly two large spring snakes fly out of the bouquet.



Produced from silks or taken from a table. The possibilities are endless.

Snakes are cloth, yes cloth, covered. the bouquet is about 12" x 12" spread upon production. Snakes are under your control at all times. You can aim for direct hits, near misses, or just general pandemonium. This could very well be the next classic prop for kid show magic.

### COLOR CHANGING PLUMES

Since 1954 when first invented, designed and



routined by Horace Marshall, no other feather flower effect as been so widely copied as our original Color Changing Plumets. We are constantly called on to replace inferior copies of this effect. We supplied professionals like Ward Thomas, Dick Gustafson, Neil Foster,

Ormond McGill, Harry Collins, Barry Yiengst and



## Hughes Magic Inc.

352 N. Prospect St.  
Ravenna, OH 44266

(330)296-4023

e-mail- hugmagic@raex.com

many many more.

If you are not doing this routine with a good set of our plumes, you missing the boat. Ward Thomas "The color changing plumes has added four applauses to my act. What more can you ask for from one effect?" Dick Gustafson echoed these sentiments. Once you see the response, you won't take this out of your show. The original and still the very best made.

Six beautifully colored plumes are exhibited in an attractive chrome stand. Passing through and unprepared rolled up white paper, they evolve through a series of color changes, each invoking spontaneous applause time after time from the audience. The climax of the routine is red-white-blue plume that is a sure applause cue. Entirely self-contained and worked surrounded and closeup. Furnished with a complete routine and full sized floor stand to give you an attractive freestanding display on stage.

Regular sized plumes are 18" and filled with loads of long full feathers. Jumbo plumes are slightly larger and 24" long making them suitable for the largest auditorium. Both units start and finish with a large colorful display on stage that packs down to next to nothing.

## **BLOOMING FLOWERS....**

### **BUSHES AND TREES**

#### **SINGLE BLOOMING FLOWER**

This is the single bloom version of our famous blooming bouquet. Easily hand controlled for the precise blooming speed you wish. Made with the same size and type of feathers as our large blooming bouquets. It can be furnished with a removable flower dart.

## **AUTOMATIC BLOOMING BOUQUET**

**(Self-powered)**



This considered to be one of the prettiest effects in magic coupled with one of the most ingenious mechanism ever made. This unit has been supplied to Kalanag, Ken Griffin, Walter Blaney, Bobo, Birch, and both Harry Blackstone Sr. and Jr., who each feature it separately in their mammoth "Enchanted Garden" productions.

Blackstone Jr. also featured this in one of his last appearances on the Miss America telecast.

The bouquet contains eleven, elegant white flower darts which can be plucked off and tossed onto a wooden board or stage. They are weighted to land point first and insure proper sticking. the large, full green bush, devoid of any blooms, slowly begins to bud, bloom and blossom into eleven large red blossoms. The blooming action is entirely self-contained. The bush can be set down in vase or on a table and continue to bloom.

This effect is hand-crafted individually to insure the most dependable mechanism possible. Our unit is the only practical, handheld, automatic blooming bouquet ever made, that is 100% dependable. There are no batteries to replace or threads to reset. The handle on our tube in no larger than most manually operated blooming bouquets made. Our units have seen sold and traded to two or more owners many times with the mechanism still functioning perfectly. Also made in a seven bloom model.

This unit is covered with an overabundance of lavish green foliage. Supplied with eleven white flower darts and complete instructions for performance and care. We recommend the construction of a traveling case for this prop which we can supply. This effect is an investment you will be glad you made.

## **MANUAL BLOOMING BOUQUET**

Some people have requested that we start to



## Hughes Magic Inc.

352 N. Prospect St.  
Ravenna, OH 44266  
(330)296-4023

e-mail- hugmagic@raex.com

manufacture manually operated blooming bouquets that allow them to bloom and retract the flowers in comedic fashion in a 5 or 7 bloom model. Available in either open bloom or rose flowers. If you are looking for a cheap fuzzy feathered blooming bouquet, don't buy ours. Furnished with or without removable darts.

### BLOOMING ROSE BUSH

Silk roses and leaves make this the most realistic bush ever made. Slowly 15 removable roses bloom while the bush sits in an attractive pot. Lots of full, thick green foliage. Roses are removable after being bloomed. Stands about 24" tall and 15" wide.



This is a very limited production effect. It is the first practical and realistic blooming rose bush made since the old P&L models which sell for upwards of \$2400. Similar units have been supplied to Landis Smith, Robert Albo, Rich Bloch, David Ben, and Jay Owenhouse. This effect is beautiful and never fails to impress an audience.

Initial and rebloomed roses are available in many colors of your choice. We will include a method to pass out real roses at the conclusion of the effect. Available with or without radio control.

### BLOOMING ORANGE TREE

Based on the legendary Robert Houdin effect, this effect has been expanded into a stage sized miracle that will build reputations.

Available in three models. Model one has nine four blossom darts that are removed from a five

foot high tree. Through thick foliage, nine real oranges are slowly seen to grow forth and can be passed out to the audience. Entirely self-contained, work surrounded. Model two not only blooms the oranges, but also the flowers which fall off and flutter to the ground. Model three adds the growth of the tree in height before the flowers start to bloom.

Not just another trick but a featured illusion that will continue to be produced in a very limited number.



## DOVE AND BIRD EFFECTS

### HUGHES DOVE CATCHING

Performer swings a net in the air where he catches not one but two live doves placed into a open wire basket.

New Sterling quality, Full feather fake, cloth net, chromed hoop, 4' stainless steel pole which packs into two 24" sections, chrome wire double load basket, no roller blinds, and many other superior features. Fu Manchu (David Bamberg) once used a similar unit. The only practical, packable unit ever made.

### HUGHES CANARY CATCHING

Same as effect as dove catching but utilizing canaries and a smaller pole. Great for cruise ships and smaller more intimate settings.

### DOVE PRODUCTION CAGE

Based on a concept by Rick Thomas and brought into reality by Richard Hughes in 1988. A beautiful circular chrome bar cage about 12" high and 10" in diameter is freely spun while holding the cage's top ring. In a flash of light, a dove appears.



## Hughes Magic Inc.

352 N. Prospect St.  
Ravenna, OH 44266  
(330)296-4023

e-mail- hugmagic@raex.com

This is a custom prop made to troupe with lots of little extras that will give that unique touch to your act. The base is deceptively thin. Not one but two photo flashes insure the faultless performance of this effect every time. One bar breaks open to allow immediate removal of the dove. The ring is mounted in a ball bearing race to give a smooth spinning action. Produced in very limited quantities. Custom ATA case available.



### DOVE PYRAMID TO BOTANIA

Dove are placed into small pyramid shape cone resting on a tray. Without any covering, the birds and the pyramid explode into a huge flower bush. Entirely self contained ending with a 25 bloom botania on it's own free standing castered stand

### LECTURE NOTES

Basic information on the selection of feathers, care of them and several new exciting ways to utilize sleeve bouquets. There is a lot of misinformation on feather flowers out there. This is the real work as taught to me by Horace Marshall and from my own experience. Take care of the expensive investment and get the most out of it.

### DOVE STREAMER

If you are looking for an easy way to duplicate the dove from silk effect without any bodyloads, this is it. A pure china silk streamer tiedyed in a rainbow of colors is gathered up and a bird is produced.

Entirely self contained.

### MAGIC CASTLE LECTURE

The information in the above lecture, as well as several other ideas, are presented in a live lecture at the Magic Castle. Professionally edited and running 55 minutes, this video shows first hand how to best use your sleeve bouquets. David Goodsell "Marshall flowers were the best in the world. The worthy successor to them is Richard Hughes, who may well be the leading expert on feather flowers anywhere today...You name it, Richard knows about it."



### ROSE FLOWERS

#### ROSE BUSH PRODUCTION

The instant growth of a twelve bloom rose bush in a beautiful jardiniere. Ready for immediate use, perform anywhere or place, packs small and produces big. Available in red, yellow, or pink roses. Featured over NBC national news from the 1985 SAM National Convention.



#### ROSE BOUTINERE

The perfect added touch of class to your act. Our famous rose flower set off by artificial leaves in a realistic boutonniere that accents any act.



## Hughes Magic Inc.

352 N. Prospect St.  
Ravenna, OH 44266  
(330)296-4023

e-mail- hugmagic@raex.com

### ROSE VASE

Not a trick but a great gift idea. A single red or yellow rose with appropriate item in dustight glass container. The perfect thank you for those special shows.

### ROSE BOUQUETS

People cannot believe these are feather roses as they are so lifelike in appearance. Utilizing the same fine grade flexible spring wire as in our standard bouquets but constructed with our rose flower design. Eight blooms of full roses with an abundance of green foliage make a beautiful and exquisite production.

### TRIPLE ROSE TUBES

Three, kinkle chrome cylinders are shown individually empty. The cylinders can be shown empty quite freely. Rapidly, three, large full pots of roses are produced. Our roses are most beautiful and realistic made. Each twelve bloom bush is of a different vibrant color of roses with an abundance of green foliage. Each bush stands about 18" tall.

No hooks or outdated methods are used. Can be performed surrounded at any time. Three, full stage, 20" tubes, pots, elegant twelve bloom rose



bushes and complete detailed instructions are supplied. Featured by Ormond McGill for over 30 Years in his South Sea Island Act.

## FANTASIO PRODUCTS

Fantasio says "Richard Hughes of Ravenna Ohio makes the finest feather flowers today" We are proud to use Fantasio's fine products in conjunction with our flower designs.

### FANTASIO CANDLE TO SILK ROSE

A candles is shown and quickly transforms into a long stemmed rose bud made of fine quality silk. The candle quickly disconnects from the rose leaving you clean to manipulate the rose for other effects.

Rose can be supplied in red, yellow, pink, white or light blue. Fits all standard Fantasio candles. We have specially reconstructed these silk flowers to work in the candles properly.

### FANTASIO CANDLE TO WILTING SILK ROSE

Same basic effect as above the rose wilts upon command to achieve a particular effect or moos for your act.

### FANTASIO CANDLE TO BOUQUET

We try to make what is needed. You said you wanted a nice full candle to bouquet to fit in your Fantasio vanishing candle and now one is available.

The candle will change into a four bloom bouquet with nice large flowers (about 5" in diameter each). The bouquet stands about 8" tall and 8" wide. It is equipped with a weighted dart tip that will allow it to be stuck into a wooden surface. Does not





**Hughes Magic Inc.**  
 352 N. Prospect St.  
 Ravenna, OH 44266  
 (330)296-4023  
 e-mail- hugmagic@raex.com

need a separate loading tube or rod but loads quickly without any external devices.

Available in a variety of colors but the more popular are red, yellow, and white. This fits any Fantasio vanishing candle with a three second modification. The candle is immediately disconnected from the bouquet upon production.

### **FANTASIO WAND TO BOUQUET**

Fantasio wand changes to a five bloom bouquet. Yes, five blooms, each about 5" in diameter. You just won't believe they all fit in the wand.

### **FANTASIO CANE TO BOUQUET**

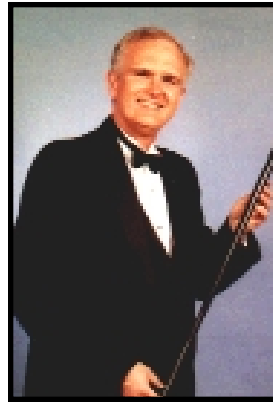
An economic alternative to our regular cane to bouquet. Made to fit the popular Fantasio plastic canes. 18" tall and about 14" wide. Eight blooms form a nicely rounded bush. Normally made with multicolor but available in special color needs upon request.



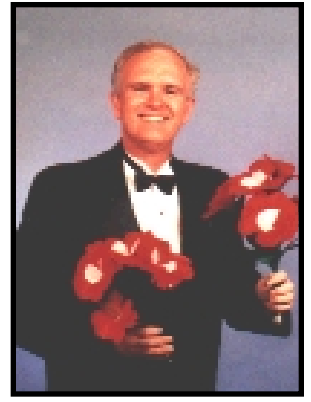
### **FANTASIO CANE TO DOUBLE BOUQUETS**

Some people wanted a better quality of double bouquets to produce from a Fantasio vanishing cane. Each bouquet contains five full blooms. The cane vanishes and you are left with a bouquet in each hand.

Ward Thomas could not believe the beauty and fullness in these bouquets when we replace his original set. In fact, he was so impressed that he referred Fantasio to us for items for Fantasio's per-



sonal act. You can buy cheaper but not better looking flowers for this effect. Furnished complete with cane,



bouquets, loading sleeve and directions.

### **POINSETTIA FLOWERS**

We first designed these flowers for Harry Blackstone's 1986 Atlantic City Christmas Spectacular. Made into dart bouquets, they provided a colorful and seasonal adaptation of his "Enchanted Garden" act which we helped to build.

Currently we are producing four products with the poinsettia flowers are standard items. These

flowers have a yellow center with shaped yellow feathers for the center stamens and large shaped red outer petals. To the best of our knowledge, this



design is original and has never been done in the history of magic before. It is truly something attractive and unique. Poinsettia flowers are available on other effects on a custom basis.

### **POINSETTIA MINI MAT PRODUCTION**

A small 16" tall mat is shown empty and rolled up and placed onto a pot. When a removed a four bloom poinsettia bouquet has appeared standing about 12" tall and 12" wide. Silks could first be produced from the mat if you wish.



## Hughes Magic Inc.

352 N. Prospect St.  
Ravenna, OH 44266  
(330)296-4023

e-mail- hugmagic@raex.com

### POINSETTIA BUSH PRODUCTION

The instant growth of a twelve bloom poinsettia bush in a beautiful jardiniere. Ready for immediate use, perform anywhere or place, packs small and produces big.

A bamboo mat is shown empty, bunched up and placed into brass pot.

Upon removal, a beautiful twelve bloom poinsettia bush, full of foliage, has appeared. Bush is 20" tall and full of lush foliage. Includes a natural color Bamboo mat and brass pot.



### POINSETTIA BOTANIA

Our 25 bloom botania made up with the gorgeous poinsettia flowers. Don't limit yourself to just using this in the holiday season as it is a beautiful production.

Deluxe krinkle chrome cone 14" tall produces a bush

approximately 18" and 14" spread. Furnished with a wooden tray with chrome trim or locking red pot.



Will hold a dove or your hand fits through the inner tube. A dream for compact packing. Brass finish krinkle chrome covers available as a special orders.

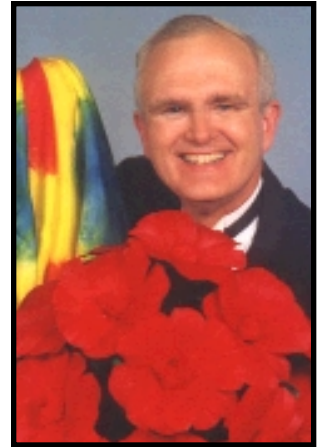
### POINSETTIA SLEEVE BOUQUETS

Same design as our normal five bloom bouquets but made up with our unique poinsettia style flowers. The perfect addition to your holiday shows for a more limited budget.

### PEONY BOUQUETS

First designed by us in 2001, this style represents peony flowers. Big and full yet totally compressible. This is second new flower look we have introduced.

Available in many colors.



### SLEEVE BOUQUETS

All our bouquets are constructed on high grade steel spring wire. They are able to be loaded within the sleeves or pants legs and still maintain flexibility. The feathers have been handselected to suit the use of the bouquets and to minimize breakage of the feathers found in cheaper bouquets. Long, full feathers are individually assembled, trimmed and collectively arranged to give you finest and fullest sleeve bouquet possible. Styled in open bloom, poinsettia, rose and peony flowers, are spectacular when produced.







**Hughes Magic Inc.**  
 352 N. Prospect St.  
 Ravenna, OH 44266  
 (330)296-4023  
 e-mail- hugmagic@raex.com

Available in a variety of sizes and colors, we can design special bouquets to fit specific load limitations you might have. Still one of the finest and most versatile of all feather flowers productions made in a long lasting, beautiful design. Cheaper bouquets are not close in beauty or durability.

### DART BOUQUETS

These are constructed on flexible, high grade spring steel in a similar manner to our regular bouquets. The shape and size of the bouquet is also similar. We have designed special darts to allow more spread with a fewer number of blooms for clients such as Blackstone and Landis Smith; and can do the same for you.



Our normal dart construction involves a poured lead weight which assures a point first landing and secure sticking of the dart in the wooden floor or board you toss onto. These darts

are the most popular and suitable for 99% of performers.

If you do an excessive number of shows, say 40 to 50 shows per week, year in and year out, you might consider our replaceable brass darts. It uses a standard nail as the point to allow easy replacement of a bent or broken tip. Wear on all dart tips will directly related to how and where you toss the darts down.



Most people can use and prefer the lead weight tips

and do not need the added expense of the brass replaceable tips. Regular open bloom, rose, and poinsettia flowers are available as dart bouquets in the color of your choice.

### CLOTH LOAD TUBES.

We manufacture our own load tubes to hold the bouquets in load position when you must produce them later in your act. We stock small, medium, and large sizes in black, red, and white. They are made to correspond in size to our 5, 6, 11 and 18 bloom bouquets. We will be happy to make special sized tubes as needed.

### GARDEN OF FLOWERS

This is a quality effect that offers a beautiful way to produce four large bouquets at any time in your act without body loads, from previously show empty foulard.

Based on a Caryle Flaming idea suggest to Horace Marshall in 1937, each bouquet is hidden by a small flap of fabric when loaded. For production this flap easily brushes aside, but hides the pull rings from flashing during the showing of the foulard. The original patterns were lost and it took over two years to learn how to properly construct the foulard to work properly and to be durable enough to bear our name. Do not confuse our foulard with cheaper imitations.



Furnished with four large bouquets in either the 6, 11,

or 18 bloom sizes, each foulard is carefully stitched and reinforced at the strategic points in top quality heavy duty clothe to provide years of use. A color piece of fabric on the front side, accented by a black border makes the foulard look smaller, is in an attractive color scheme to compliment the bouquets. We can make special colors of foulards or bouquets to coordinate with your act.



## Hughes Magic Inc.

352 N. Prospect St.  
Ravenna, OH 44266  
(330)296-4023

e-mail- hugmagic@raex.com

### GRAND ENTRY PRODUCTION

Designed to work in conjunction with the Garden of Flowers a la Blackstone. Each bouquet is held individually in a separate pocket to help protect the flowers. Steal from an assistant or table to produce an added load of bouquets. Each bag is made individually to properly accommodate the proper length, sizes and number of bouquet you wish to use.

### WATER FOUNTAIN PRODUCTION

Performer catches a bowl of water under a foulard and places it onto a table where the cover is removed to reveal a 15" bowl with a large circular spray of water spraying up 12"+ in the air. Entirely self contained. Runs on one 9 volt battery for hours. Complete with knock apart roll on table with locking casters. Lance Burton has featured this in his show for over five years now.



### DOUBLE WATER FOUNTAIN PRODUCTION

Same effect as water fountain production but without any reloading a large bowl of feather flowers is produced from the same cloth

### FLOWER BOWL PRODUCTION

Performer catches a bowl under a foulard and sets it on the table. Removing the foulard, there is a large bowl of feather flowers almost 24" wide. Complete with knock apart roll on table with locking casters.

### TABLE BASES

Aluminum bases with offer a lightweight stable base for many props. The steel upright slips in place without any tools bringing the finished height of the base about 36" tall. Items can be easily attached to top column plate with nuts and bolts. Locking casters included at no extra charge. Hardwood tabletops are available to complete the unit.

### CUSTOM DESIGNS

We have worked very hard to produce the very best feather flower effects in the world. We are known not only for our standard effect but for the custom effects we build for our clients. Whether you want something large or smaller, or that just looks different, or something totally exclusive to you, we will be happy to work with you.

Not only do we custom design flower effects but we also undertaken limited repair and restoration work. We have designed many custom non feather items for clients, such as silks, mechanical apparatus, and sheet metal work. Contact us and we can tell you if it is within our scope. If we can't do it, we will tell you and try to refer you to someone who should be able to help you.

We are also available on a consultation basis to help with an act or show.

### COMEDY LONG GLOVE

Performer remove one glove and as he starts to remove the second glove it continues to grow and grow; until it is over 60" long. Made of the finest dress gloves available, normally for the left hand. Right hand long models available upon request. Complete, with a matching normal glove for the other hand.



## Hughes Magic Inc.

352 N. Prospect St.  
Ravenna, OH 44266

(330)296-4023

e-mail- hugmagic@raex.com

### MULTICOLOR LONG GLOVE

Same great effect as the comedy long glove, but now the glove is seen to change colors as it comes out. Starting with white and progressing through not one or two but three multi-colored changes. Multicolors are bright prints with stripes, or dots, etc.



This is a new twist on an old effect that has been a sellout at many major conventions. Our original design and first introduced in 1984. Don't be confused with the cheap, knockoff copies of this we are called on to replace. Left hand is standard. Right hand models upon request. With a matching normal glove for the other hand

### FLINTASTIC© LONG GLOVE

Howard Flint's addition to our multicolor long gloves. Same wonderful bright color changes, but now over 18' feet. Special kicker of pulling pair of lacy underwear at the end of the glove is included (or easily removed if you wish). This was a hit at Abbott's Magic 50th Get Together. Left hand is standard. Right hand models upon request. With a matching normal glove for the other hand.

### DRESS GLOVES

100% cotton dress gloves. The same we use in all our effects. Furnished in large or extra large sizes. Large fits most performers. No snaps to fumble with during the act. Washable.

## BOTANIAS— SIZES FOR ALL NEEDS

We have built the largest botania in the world, used to transform girl into a seven foot bush for Blackstone and the smallest botania of only 7" tall. We have botanias for square circles, double load, five load, and other specially designed botanias. If our standard line of sizes and types does not fit your needs, contact us and we can determine how we can fill your specific need.

### IMPORTANT FACTS AND FEATURES OF OUR BOTANIA EFFECTS

1) All outer tubes are made with an embossed, grade A, chrome steel in what we refer to as a "Krinkle Chrome" finish. This serves two purposes: it helps to prevent fingerprints from showing as they would on unembossed chrome steel and it makes the botania cone sparkle and shine by picking up the spectacular highlights of the embossed design. This is our trademark design and we are proud to offer this at no additional charge to you. We have recently begun to introduce a brass finish with the same embossed design.



2) Our locking pot allows you to show the cone separate from pot, engage to pot quickly and firmly pro-



**Hughes Magic Inc.**  
 352 N. Prospect St.  
 Ravenna, OH 44266  
 (330)296-4023  
 e-mail- hugmagic@raex.com

duce the bush at arm's length. Producing it at arm's length and raising the unit up as the cone clears, makes it look like a bigger bush. Our mechanism has been in use over fifty years and is the most dependable ever made. It is purely mechanical and does not depend on magnets to grip the cone.

3) All the flowers are hinged with specially wound springs that instantly and solidly raise them to full extension upon removal of the cone. These springs will retain their strength for years to come.

4) All flowers have special hard centers which help to maintain the flower shape for many years. Lots of thick, green foliage fill the botania out fully.

5) Our cone edges are fully rolled, wired and finished to help protect not only the flowers but also the performer from cuts and abrasions.

6) Our botanias are made to troupe and be used. Not to sit on a shelf and look pretty (which they are). the feathers are handselected especially for the needs of this effect to minimize breakage of the feathers. Each flower is trimmed and shaped to achieve the fullest, most beautiful bush possible. This is the unit more professionals depend upon and recommend.

**25 BLOOM ON TRAY**

25 blooms with a 14" Krinkle chrome tube. Bush extends out to approximately 18" high and a 14" spread. Made with a wooden tray and matching chrome trim. A dove or your hand will fit in the inner tube. A



dream for compact packing.

**25 BLOOM ON POT**

Same unit as above but supplied with a 6" red flower pot with our dependable locking mechanism. Greatly adds to the illusion of larger bush and allows production at arm's length. Designed for my personal act in 1981.

**30 BLOOM ON A CLEAR TRAY**



30 blooms on a clear Plexiglas tray trimmed in krinkle chrome. Transform one or two doves into a large bush 30" high and 24" wide. Krinkle chrome outer cover is 16" tall.

**SQUARE CIRCLE BOTANIA**

An attractively lacquered and stenciled wooden chimney and metal tube are both shown empty. An enormous production of silks is made; followed by a dove or small rabbit and finally a large flower



bush much bigger than the tube or box is produced. Twelve large bloom in a bush about 14" x 14".

**42 BLOOM WITH POT**

Our most popular unit. 42 large blooms produced from an 18" cone into a bush 36" high and 24"



## Hughes Magic Inc.

352 N. Prospect St.  
Ravenna, OH 44266  
(330)296-4023

e-mail- hugmagic@raex.com

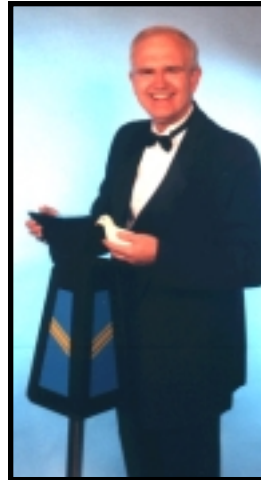


wide. This unit features our proven locking pot design which allows you to produce the bush at arm's length. Such high standards of quality and dependability for this type of mechanism easily surpass any other mechanical or magnetic type of catch arrangement ever offered. A bright 10" flower pot

adds to total height of the effect making a total height close to 4 feet high. Krinkle chrome cover has a deceptively thin design.

### 50 BLOOM WITH POT

50 blooms for an even larger effect. Bush size 48" x 30" wide from a 24" krinkle chrome tube. Complete with a 10" locking pot in a bright red finish which brings the total produced height of the bush on the pot to almost 5 feet tall. Same units supplied to Tihanny, Reveen, and David & Dania.



### DOVE PYRAMID TO BOTANIA

Dove are placed into small pyramid shape cone resting on a tray. Without any covering, the birds and the pyramid explode into a huge flower bush. Entirely self contained ending with a 25 bloom

botania on a free standing castered stand.



### SILKS FOR THE NEW MILLENNIUM

Since the late 1980's we have been producing our own line of silks in many of today's most popular colors..penetrating yellows, zesty pinks, vivid turquoises, stunning greens and astounding oranges.

It took us a long time to find the right color match to properly produce these shades on silk. We are sure that you will find these colors fresh, clean and exciting for today's magic. We stock a variety of sizes in 8 and 6 momme in these hot colors.

You can expect the same fine quality in our silks as our World Famous Feather Flower Products. We utilize only pure China silk, carefully cut and hemmed by us personally with a tight double turned hem. We custom blend our dyes to achieve the brightest colors. In addition to the hot colors above, we also stock the more traditional colors of red, blue, green, purple, black and white. We offer several different tie dye patterns to spice up your act and can handpaint custom designs on silks if need be. Find out why professionals such as Dale Salwak, David Seebach, Brett Daniels, Mark Kalin, James Cielin, and many more are coming to Hughes Magic for their silk needs.



## Hughes Magic Inc.

352 N. Prospect St.  
Ravenna, OH 44266  
(330)296-4023

e-mail- hugmagic@raex.com

At this writing, we are the only manufacturer producing 6 momme silks on a regular basis which are an absolute necessity for tight loading in small places.

### **FOUNTAIN OF SILKS**

Fourteen silks cascade open from your hands in a carefully coordinated blend of colors erupting into a tie eyed silk three times the initial silk size. Available in two sizes..Regular(15" to 45") and Jumbo Professional (36" to 6'). Made with our finest 8 momme silks. Positive and secure release mechanism.

### **COSMIC FOUNTAIN OF SILKS**

Sixteen 15" silks made up with our hot Neon color cascading through color changes before erupting into a 45" tie dye finish. An old favorite made fresh with the hottest colored silks in magic today. Don't date your act with outdated props. Update, be noticed, and get booked!!!

### **20TH CENTURY SILKS**

Two solid silks are tied together and placed in plain view. A brightly colored tie dye silk is vanished only to appear tied between the two previously tied silks. One of the classics of magic made in fine quality.

Available in non gimmicked or gimmicked styles. Tie dyes are available in sunburst or diagonal patterns. A solid color silk could be used instead of the tie dye. Outer silks normally supplied with one blue and one red silk or two blue silks.

### **HALF DYED SILKS**

At the conclusion of silk dying routine, the silk is shown to be half dyed in your hand. Made famous by Billy McComb. Stocked in 12", 15" and

18" in variety of color combinations. Custom color combination available.

### **COLOR CHANGING SILK**

Standard Goldin method made in bright standard or neon colors. Totally self contained. Available in 12" and 18" sizes. Combinations are made to order as ordered.

### **COLOR CHANGING STREAMER**

A black streamer run through your hand changes into a brightly colored tie dye streamer. 4" wide x 36" long use it with your favorite coloring book routine or just to add bit of flash to the act.

### **STREAMERS**

100% silk streamers with narrow double turned hems to allow for compact packing. Solid colors or tie dyed in traditional or neon colors. 6 or 8 momme weights. 4", 9" and 12" widths. Custom widths and lengths available. Continuous length without seams available up to 150 feet long.

### **SILK WINDER**

The best method for loading a very large quantity of streamers or silks into a compact load area. Quality metal construction that will last several lifetimes. complete instructions.

### **BLENDO**

Six brightly colored silks blend into a larger tie dyed silks composed of the color just vanished. Unprepared method that can be quickly learned to allow maximum concentration on presentation. No bulky, double silks used.

### **ATOMIC COCKTAIL SHAKER**

After having featured this in my own act for over twenty years, I have decided it is time to share this wonderful effect with the fraternity.

A small 3" x 10" tube is shown to be empty. Both ends of the tube are capped with paper. A clear Plexiglas tray trimmed in krinkle chrome is wiped clean. First a red silk if produced from the top of the tube. Likewise a red silk it produced from the bot-



## Hughes Magic Inc.

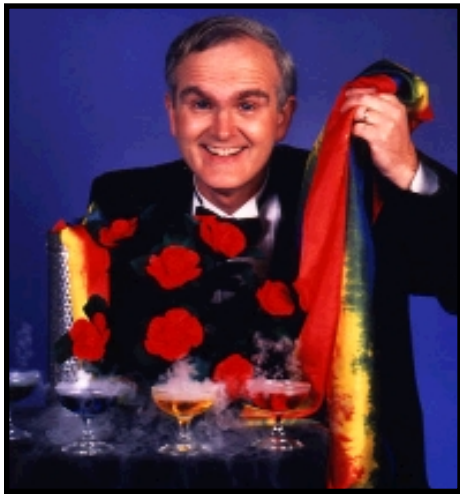
352 N. Prospect St.  
Ravenna, OH 44266  
(330)296-4023

e-mail- hugmagic@raex.com

tom of the tube. Now smoking red liquid is poured into a wine glass. The process is repeated three more times with blue, yellow, and green silks and smoking liquids being produced in a like manner. The tube is set on the table and a 9" x 24" streamer is produced followed by a large bouquet of flowers.

You get almost everything you need to perform this effect in

a special custom fitted case. The krinkle chrome tube, paper rings, gimmick, tray, stand, towel, food coloring, sleeve bouquet and load tube, 9" x 24" , eight 18" silks and intensive instructions for making this a



feature effect. Standard model has a open bloom 5 bloom bouquet. Deluxe model has an eight bloom rose bouquet.

Don't pass up a chance to own this reputation maker.

### DOVE STREAMER

If you are looking for an easy way to duplicate the dove from silk effect without any bodyloads, this is it. A pure china silk streamer tiedyed in a rainbow of colors is gathered up and a bird is produced. Entirely self contained.

### PARIS SILK PRODUCTION CABINET

Using Horace Marshall's original design and patterns, this small 3" x 4" x7" cabinet is exhibited by opening the two front doors and the top door and

placing your hand out through the front. Upon closing the door, a large production of silks can be made from the top of the cabinet. Will hold a 12" x 50' streamer.

Finished in bright red with brass hardware, this little wooden cabinet is an extremely nice quantity production device for silks. No angles to worry about. Natural finish models available upon request.



### DELUXE PHANTOM TUBE

The most beautiful and practical phantom tube ever made. Twelve inches tall and just under 4" in diameter. Made with bright, grade A, krinkle chrome exterior and bright chrome interior, there is no paint to worry about chipping off. Fingerprints do not show on the tube's exterior. Holds a 9" x 25' streamer. Two chrome steel paper rings and cloth carrying bag included. Absolutely the last phantom tube you will ever need to buy.

Special models available with Brass finish or with mix and match chrome and brass finishes.

### BULLET LOAD

Made to fit the deluxe phantom tube, it will allow you increase the load capacity of that tube. Did someone say Ade Duval?

### DEVILS HANK

No one made this so it looks normal. Made with fine quality suit lining that look absolutely normal and in place in most upscale clothing. Eugene Burger bought two and sent Jeff McBride over to buy two. Phil Whilmarth said "absolutely the best devils hank I have seen".

The pocket is internally hung so there is no sag even with a heavy watch in it. There are little buttons so you know which corners to hold when opening it up. Available in red, black, navy blue, grey, burgundy, and light tan. A great utility prop to vanish cards, coins or even to force numbers.



**Hughes Magic Inc.**  
 352 N. Prospect St.  
 Ravenna, OH 44266  
 (330)296-4023  
 e-mail- hugmagic@raex.com

**FAN OF SILKS**

Produce from table or body load a large spray of 7 silks on spring loaded brass staves. Opens automatically upon release. Available in custom colors with high quality China Silks. Ask about our red white and blue combinations. About 15" tall collapsed and spread to over 30" wide when produced.



**FLAG TIERS**

These have not been produced for many years and never in this sterling quality. Constructed with solid brass and 100% pure China silk.



Also known as the "Flag of all Nations", A small fan of silks is produced followed quickly by a second larger spray of silks. The first produced fits into the top of the second nesting on top of one another. A third fan, larger yet is produced and both are stacked on top of it making a huge display over five foot tall.

Available in a rainbow of bright colorful silks or in a red, white, and blue color scheme. Also available in custom colors. Furnished with a load bag and display stand.

This effect was a favorite of J. B. Bobo. To see his routine look in the "Bobo Magic Show" by Magic Inc.

**BAMBOO SURPRISE**

A small bamboo mat is shown empty and then a 9" x 12' brightly colored streamers is produced. Showing the mat empty again, a large five bloom bouquet is produced.

No body loads. Use any time in an act. Pack small and plays big.

Complete with mat, 100% pure China silk streamer, and our famous high quality sleeve bouquet. Available in multicolor or a red, white and blue color scheme. Also available in custom colors or a larger size.







## Hughes Magic Inc.

352 N. Prospect St.  
Ravenna, OH 44266

(330)296-4023

e-mail- hugmagic@raex.com

### A FEW TESTIMONIALS.....

#### Harry Blackstone:

*"I cannot tell you what a pleasure it is working with you. Your dedication is as great as the flowers you make--and they are the best!*

*In the many years that Horace Marshall made the flowers for my dad, I tell you no one could match his workmanship--but YOU have! Thank you again--very much.*  
October 21, 1990

#### Ormond McGill:

*"Recently, Mr. Richard Hughes, who has taken on the Marshall business, since the death of Horace, personally constructed for me a large sized botania..In substance, I will say that all the flower effects manufactured by the **Hughes Magic Company**, are splendid. I unhesitatingly recommend them to all performers looking for the very best."*

December 15, 1989

#### Ward Thomas:

*"Thank you so much for all the special feather flower effects you have created for me. Your flowers are the best in the business. Your big blooms and bright colors and expert workmanship outshine all your competition."*

March 24, 1989

#### Geoff Durham:

*"The **FASTEST TRICK IN THE WORLD** is really a stunner....As far as a performer is concerned, the wonder is in the beauty of the props, the strength of construction and the fact it can't go wrong.*

#### Sid Lorraine:

*"Rated as the finest feather flower supply house in the country..I have seen many of the Hughes magical effects, as well as their floral beauties, and can testify to the quality."*

New Tops July 1989

#### LEVENT:

*It is with great pleasure that I recently received my second Al Delages World's Fastest Trick. The first one, I bought from you over 10 years ago. And it has served me well for thousands of show. And frankly, the reason I bought a second one. Was my constant fear that the airlines might lose my act. If not for that I'm sure I could run the first one you made for me for several decades more.*

*Also, I must say that your products are a rarity. In that no modification is necessary in order to get them ready for a professional show. It is clear that you expend a serious amount of hard work and detailed craftsmanship in all your products.*

May 7, 2002

#### Joe Lutz:

*"The flowers you sold me are holding up very, very good. They are the one thing that I can count on getting some applause."*

December 8, 1979

#### David Goodsell:

*"Marshall feather flowers were the best in the world. The worthy successor to them is Richard Hughes, who may well be the leading expert on feather flowers anywhere today.....You name it, Richard knows about it.*

MUM December 1998

#### Fred Story:

*"The large botania arrived yesterday. It is very beautiful and we are extremely pleased."*

February 6, 1988

#### Phil Wilmarth:

*"Recommended for quality construction and bright, vivid colors."*

Linking Ring  
August 1989

#### Harry Anderson:

*"A great prop that makes you look like you know what you are doing. Who could ask for anything more?"*

May 20, 1986

#### Ed Bruce:

*"The late Sid Lorraine said your flowers were even better than Marshall's.... a fine compliment."*

December 15, 1989

#### Obra Matthews:

*"Received the bouquets yesterday..WOW!! **THEY ARE BEAUTIFUL.....THE BEST I HAVE EVER SEEN**...Anything else looks bad beside them. Nothing beats quality."*

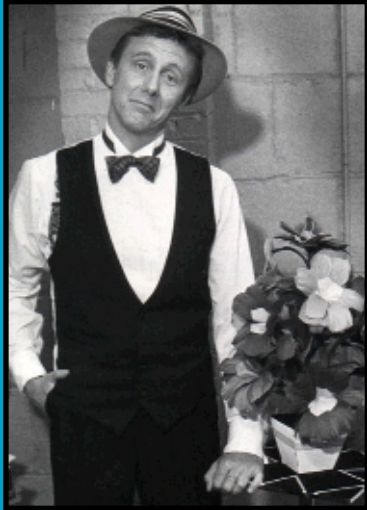
April 12, 1985



# Hughes Magic Inc.

352 N. Prospect St.  
Ravenna, OH 44266  
(330)296-4023

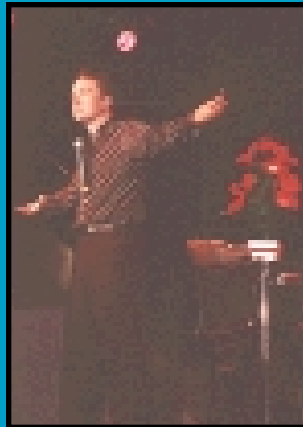
e-mail- hugmagic@raex.com



**Harry Anerson..” A great trick that makes you look like you look like you know what you are doing?”**



**Gene Gordon who was Horace’s Marshall’s first Customer**



**Levent works with his second Hughes “Fastest Trick in the World”**



**Ronald McDonald**

**Tina Lennert’s washerwoman uses a Hughes blooming feather duster**



**Harry Blackstone Jr. closed the Enchanted Garden with an Automatic Blooming Bouquet as did his father**



**Len Vintus**



**Miss America Susan Akins with Rick Walker**



## Hughes Magic Inc.

352 N. Prospect St.  
Ravenna, OH 44266  
(330)296-4023

e-mail- hugmagic@raex.com

### **IMPORTANT ORDERING INFORMATION!!!!**

Individual handcrafting goes into each effect as ordered. No two are exactly alike. An inventory of effects is not generally maintained, but occasionally we make a few items ahead to be ready for unexpected rush demands.

Reasonable mass production of these items is not possible for us to do and to continue the high level of quality we demand. This limited production insures you of something beautiful, special and unique in your show. All received orders are placed onto a production schedule. Estimation of completion time is usually rather accurate and often sooner. When production is begun you will be notified to send the balance of the payment for the effect by money order or bank check. We do not like to accept personal checks. **ABSOLUTELY NO ORDER WILL BE SHIPPED WITHOUT THE PERSONAL CHECK FIRST CLEARING THE BANK.** No payment is sent until work is begun, though we may request a deposit to insure a place in production scheduling. This policy allows you to not tie up your money needlessly. Note: most smaller items or silks are in stock at all times so you may send full payment including shipping and handling with your orders.

We do accept Master Card, Visa or Discover as a service to our customers. This was primarily done to help our foreign customers and for those rush orders that can't wait for a check to arrive and clear the bank. To avoid delays, please include with your order the name as it appears on the card, type of card, account number, expiration date and a phone number where you can be reached.

We do not ship for inspection, trial or on credit. **ALL SALES ARE FINAL** We cannot exchange or

refund on effects or props unless there is a defect in materials or workmanship. A rehandling charge will be made on all permissible returns. Absolutely no returns without a prior written authorization. All C.O.D. shipments must include a 10% deposit with the order and will be shipped for cash funds only. Shipment in the United States is usually by Fed Ex Ground or United Parcel Service for the larger items and the US Postal on smaller effects as they have been the most reliable and economical. However, we can ship via Federal Express, Emery, or other carriers as needed. If you have an account with another carrier, we can direct bill it to your account. In all cases, customer will pay all shipping costs involved including packaging unless otherwise noted. Overseas orders contact us as shipping costs vary greatly according to the weight and size of the object. Credit card use for overseas shipping simplifies this billing.

Custom designed effects to fit your needs will be handled on an individual basis as to pricing, etc. Though repair to flower effects are not generally done, especially those not of our make or Horace Marshall, from time to timesome limited repairs will be undertaken. Please be advised that because of the time and materials involved it is usually a better investment to sell the old effect and apply the money on a new one. Feel free to contact us for more detail concerning repairs or custom work.

A quick word on warranties..They are only as good as the person giving them. I have been in business since 1976 and I stand behind my work. Check my client list and realize that I must be doing something right.